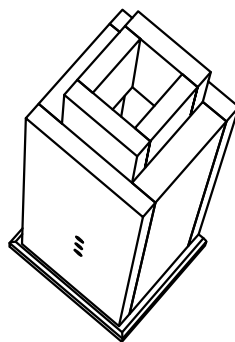
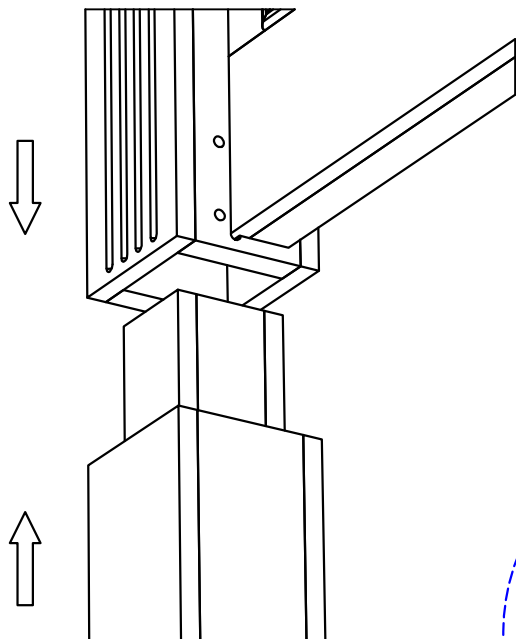


## INSTRUCTIONS:

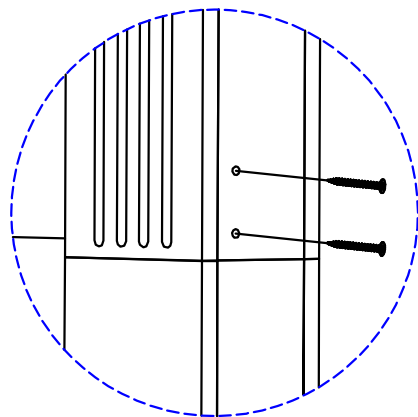
USE THE CORRECT SENSE OF THE LEGS (LEFT OR RIGHT), THE SENSE IS LOCATED ON THE COLOR LABEL IN THE BACKSIDE OF THE HEADBOARD AND THE BACKSIDE OF THE LEG.



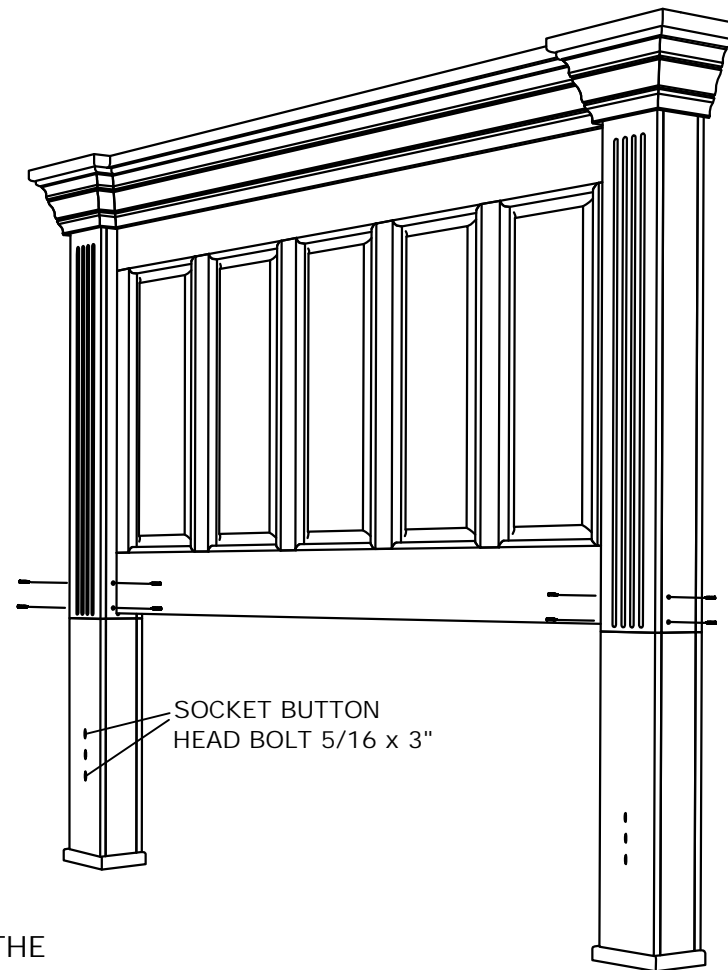
THE LEG SHOULD BE PLACED AS SHOWN ON DIAGRAM, APPLYING FORCE IN THE CORRECT DIRECTION.



THE HEAD AND LEGS MUST BE COMPLETELY SPLICED



INSERT THE SCREWS AS SHOWN IN THE DIAGRAM



HARDWARE	
DESCRIPTION	#PCS
FLAT HEAD SCREW 12 X 2-1/2"	8
ALLEN KEY 3/16	1

PRODUCT IMAGE SHOWN IS FOR ILLUSTRATIVE PURPOSES ONLY, SHOULD NOT BE TAKEN AS REFERENCE POINT



## ASSEMBLY INSTRUCTIONS

I-HBD-C001