

STEP 1 - INITIAL PREPARATION:

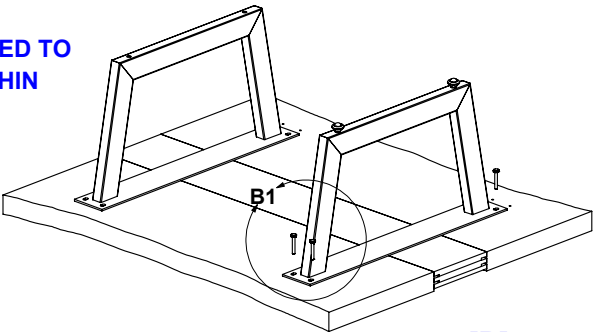
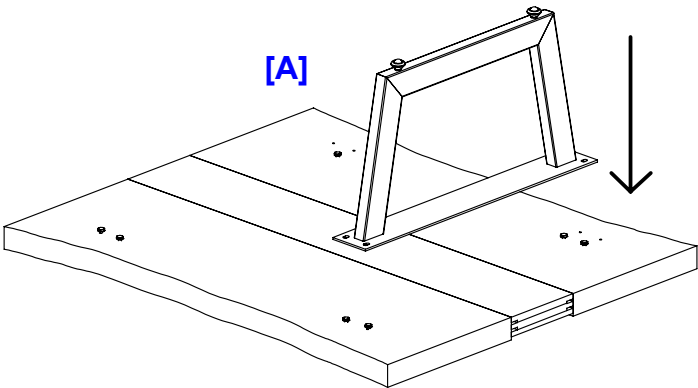
WITH THE HELP OF ANOTHER PERSON, PLACE THE TOP PANEL ON A CLEAN, FLAT SURFACE, WITH THE INNER SIDE FACING UP.

STEP 2 - LEG ATTACHMENT:

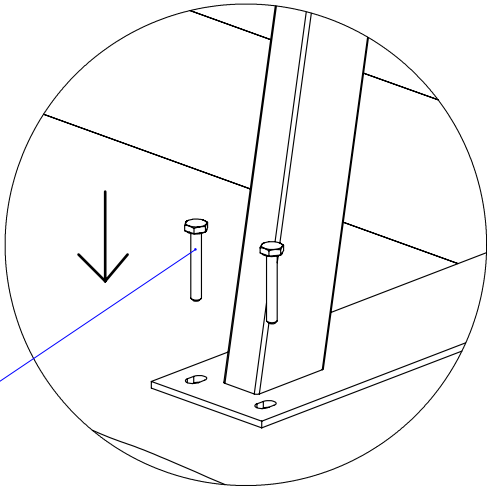
ALIGN ONE OF THE LEGS WITH THE PRE-DRILLED HOLES ON THE TOP PANEL. USING A DRILL, INSERT AND TIGHTEN THE SCREWS INDICATED IN DETAIL B1. REPEAT THIS STEP FOR THE SECOND LEG.

STEP 3 - FINAL PLACEMENT:

"ONCE BOTH LEGS ARE PROPERLY SECURED, PROCEED TO POSITION THE TABLE AT THE DESIRED LOCATION WITHIN THE INSTALLATION AREA.



[B]



HEXAGONAL HEAD WOOD
SCREWS 5/16 X 1-1/4"

DETAIL B1
ESCALA 1 : 5

IFD8841CKT / IFD4851CKT / IFD8841CKTDL / IFD4851CKTDL	
DESCRIPTION	#
HEXAGONAL HEAD WOOD SCREWS 5/16 X 1-1/4"	8
IFD8841END / IFD4851END	
DESCRIPTION	#
HEXAGONAL HEAD WOOD SCREWS 5/16 X 1-1/4"	4
IFD8841CST / IFD4851CST	
DESCRIPTION	#
HEXAGONAL HEAD WOOD SCREWS 5/16 X 1-1/4"	4
IFD8841CST / IFD4851CST	
DESCRIPTION	#
HEXAGONAL HEAD WOOD SCREWS 5/16 X 1-1/4"	4



ASSEMBLY INSTRUCTIONS

I-MIX-E016