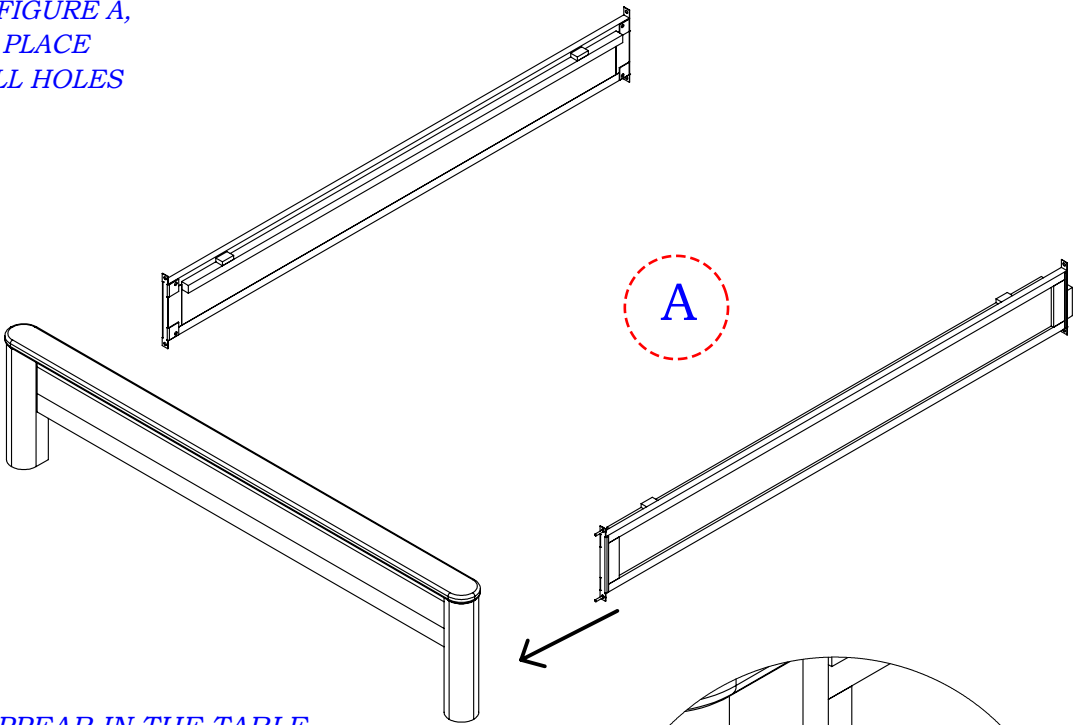


STEP 1

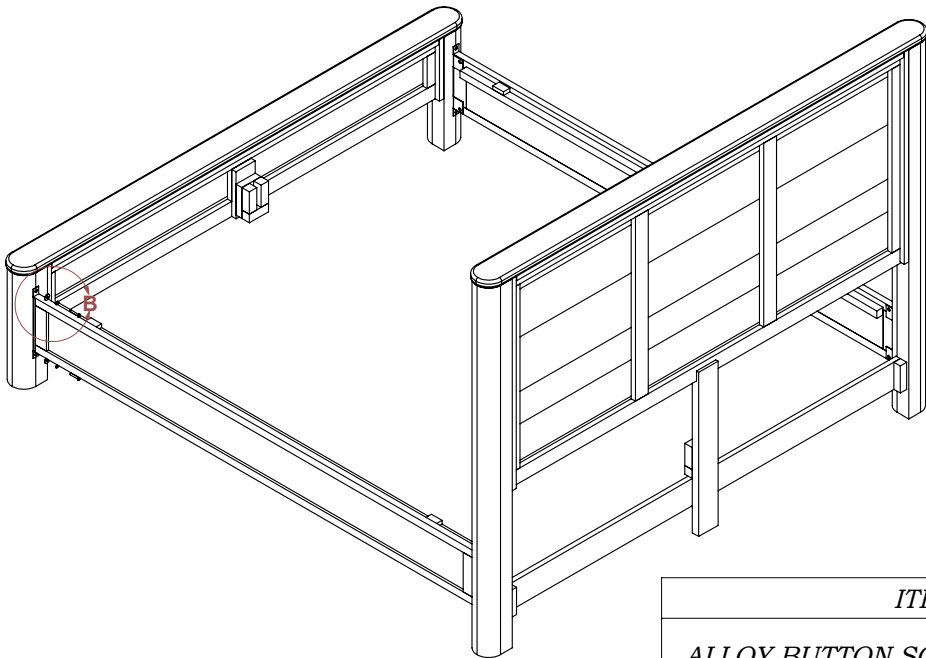
THE IMAGES ARE FOR REFERENCE ONLY

HAVING THE PARTS SHOWN IN FIGURE A,
PLACE THE RAILS IN FIGURE A, PLACE
THE RAILS MATCHING THE DRILL HOLES



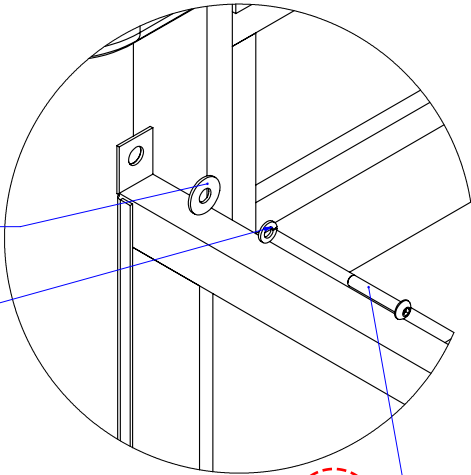
STEP 2

PLACE THE SCREWS THAT APPEAR IN THE TABLE
IN THE LOWER RIGHT TABLE AND AS SHOWN IN
FIGURE B, MATCHING IN FIGURE B, MATCHING
DRILL HOLE TO DRILL.



FLAT WASHER 5/16 X 1"

LOCK WASHER 5/16"



B

ALLOY BUTTON SOCKET CAP SCREW
5/16 x 1"



ASSEMBLY
INSTRUCTIONS

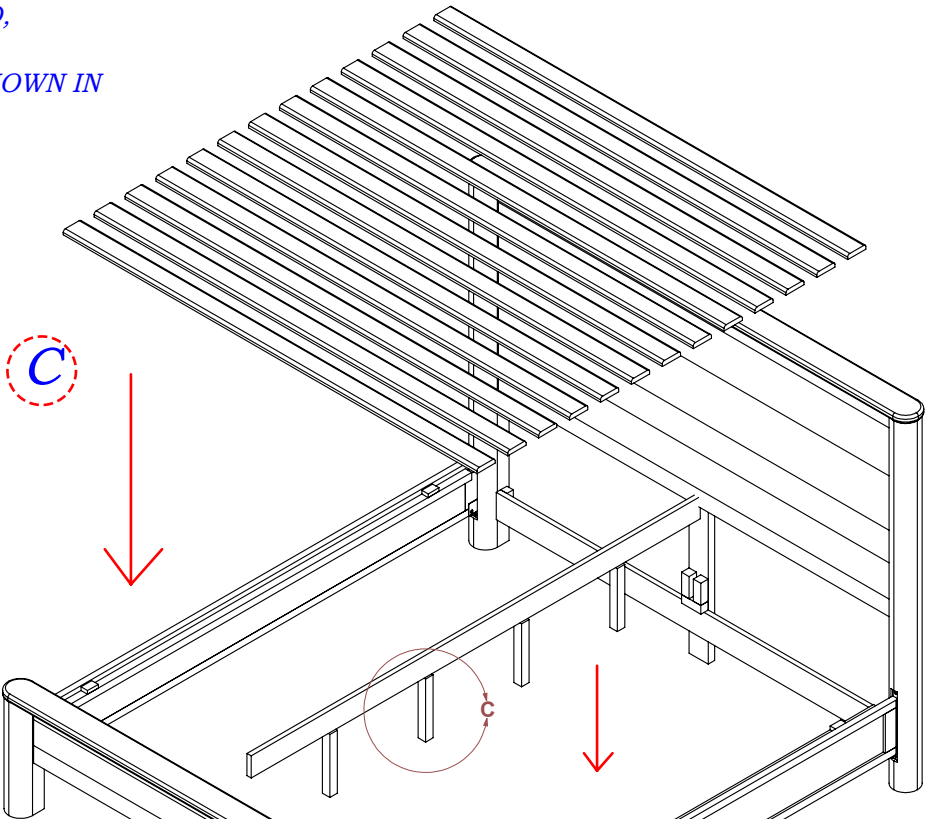
I-PLT-E022

ITEM	#
ALLOY BUTTON SOCKET CAP SCREW 5/16 x 1"	8
LOCK WASHER 5/16"	8
FLAT WASHER 5/16 X 1"	8
HEX KEY 3/16"	1

STEP 3

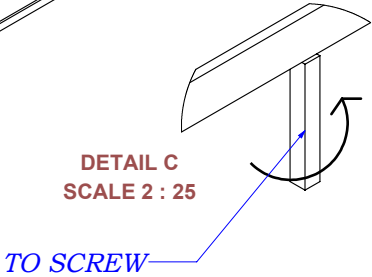
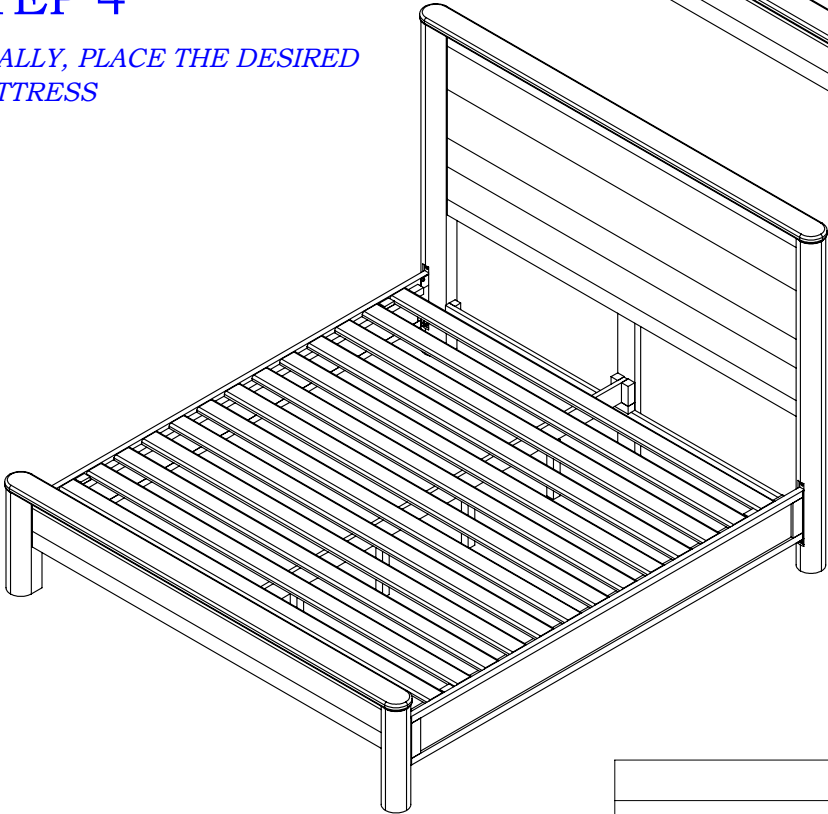
THE IMAGES ARE FOR REFERENCE ONLY

ONCE ALL THE HARDWARE IS ASSEMBLED,
FIRST PLACE THE CROSSBEAM WITH THE
HEELS , THEN PLACE THE DECKING AS SHOWN IN
THE FIGURE. C



STEP 4

FINALLY, PLACE THE DESIRED
MATTRESS



ASSEMBLY
INSTRUCTIONS

I-PLT-E022

ITEM	#
ALLOY BUTTON SOCKET CAP SCREW 5/16 x 1"	8
LOCK WASHER 5/16"	8
FLAT WASHER 5/16 X 1"	8
HEX KEY 3/16 "	1